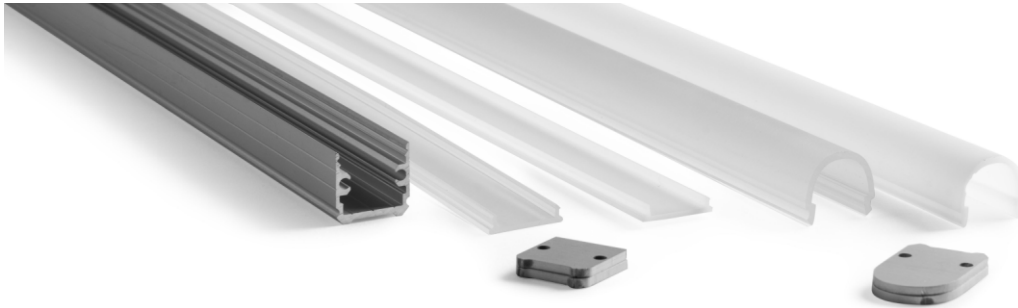
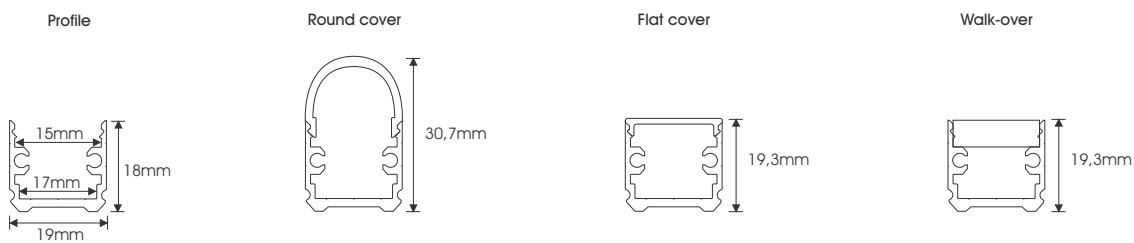




19mm Profile



Dimensions



Technical specifications

Profile

Versions: Normal / Low
Material: Aluminium
Material finish: Aluminium Anodised
Maximum length: 6000mm

Cover

Versions: Round / Flat / Walkover
Material: PMMA
Material finish: Opal / Frost
Maximum length: 3000mm

Accessoires

End cap: Round / Flat
Mounting: Mounting clip



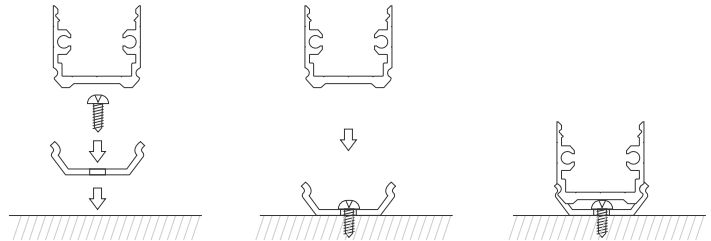
Installation instruction

There are various options available to mount aluminium profile on to a surface.

See below the illustrations for three of the most commonly used mounting options.

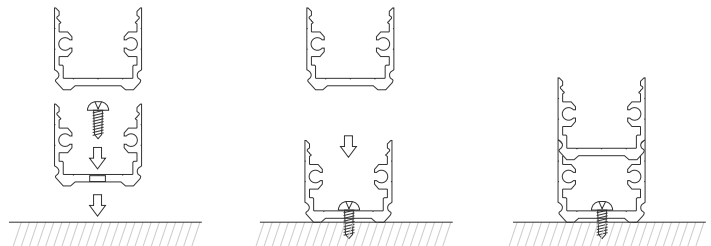
Mounting clip

When using mounting clips place always two mounting clips for the first meter, for every extra meter place one extra.



Mounting profile

When using mounting clips always place two mounting clips for the first meter, for every extra meter place one extra.



Order Code

19.ALU.	- 19mm aluminium profile length
19.STRIP	- Mtr. aluminium strip for 19mm profile
19.END.RO	- End cap round 19mm profile
19.END.RO.C	- End cap round with cable entry 19mm profile
19.END.FL	- End cap flat 19mm profile
19.END.FL.C	- End cap flat with cable entry 19mm profile
19.24.CLIP	- Universal mounting clip for 19 & 24mm profile

19.OPA.FL
19.OPA.RO
19.OPA.WO

- Opal cover flat for 19mm profile
- Opal cover round for 19mm profile
- Opal cover walkover for 19mm profile

19.FRO.FL
19.FRO.RO

- Frost cover flat for 19mm profile
- Frost cover round for 19mm profile