



LT-UD-700 Universal dimmer



The AD-UD700 is a universal dimmer that is suitable for high-voltage luminaires and LED retrofit lamps. Two independently controllable outputs which have a 700W output each. Parallel connection is possible creating a combined 1400W.

Each channel can be configured as phase leading or phase trailing. The AD-UD700 Universal dimmer is controllable as stand-alone, 0..10V, 1..10V or DMX and is configurable through on-board dip-switches or via PC software.

Features

Multi channel
Double output

Configurable phase control
Leading or trailing edge

Mounting
DIN-rail

Control options
DMX-512 / 0..10V / 1..10V / Switches

Technical specifications

Power

Input voltage:	230VAC (45 to 60Hz)
Output voltage:	230VAC
Output power:	2 x 700W or 1 x 1400W
Channels:	2
Power dissipation:	0,5W .. 6W (Standby .. full load) per channel
Isolation voltage:	3500V
Phase control:	Leading or trailing edge (automatic detection)
Loads:	Resistive, inductive an capacitive loads

Control

Control input:	DMX-512 / 0..10V / 1..10V / Switches
----------------	--------------------------------------

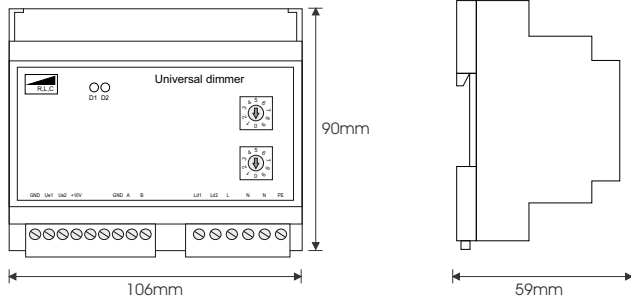
Miscellaneous

Housing:	Desktop ABS plastic
Weight:	300 gram
Input connector:	Print connector
Screw terminals:	Max 1,5mm ²



LT-UD-700 Universal dimmer

Dimensions



Order Code

LT.UD.700 - LT-UD-700 Universal dimmer; 2 channel; 2 x 700W;

Potentiometers

The UD-700 universal dimmer has two blue potentiometers on top of the dimmer, when both channel 1 and 2 are separate each potentiometer represents an output channel.

With the potentiometer it is able to set the minimum brightness level of each channel or can be used in stand-alone mode. Make sure to put all potentiometers to 0% when operating in any mode other than stand-alone mode.

LED indication

1 x Red LED	LED status	Description
	OFF	No operating voltage
	ON	Operating voltage
	Flash	Too high mains voltage > 400
	3 x flash + break 1.5s	No valid parameters available
1 x Yellow LED	LED status	Description
	OFF	No DMX512 detected
	ON	Data for the set address are not transmitted. Data format is incorrect
	1Hz flashing	Communication processor receives data
2 x Green LED	LED status	Description
	OFF	Output OFF, no error
	ON	Output ON, no error
	1Hz flashing	Warning, shutdown high temperature
	1 x flash + break 1.5s	Overload
	2 x flash + break 1.5s	Voltage peak > 450V
	3 x flash + break 1.5s	Failure of communication with dimmer processor

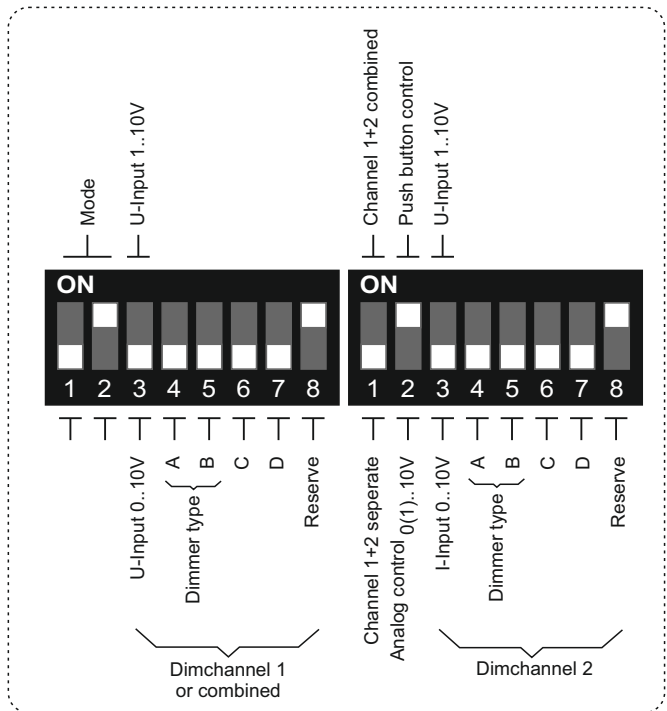
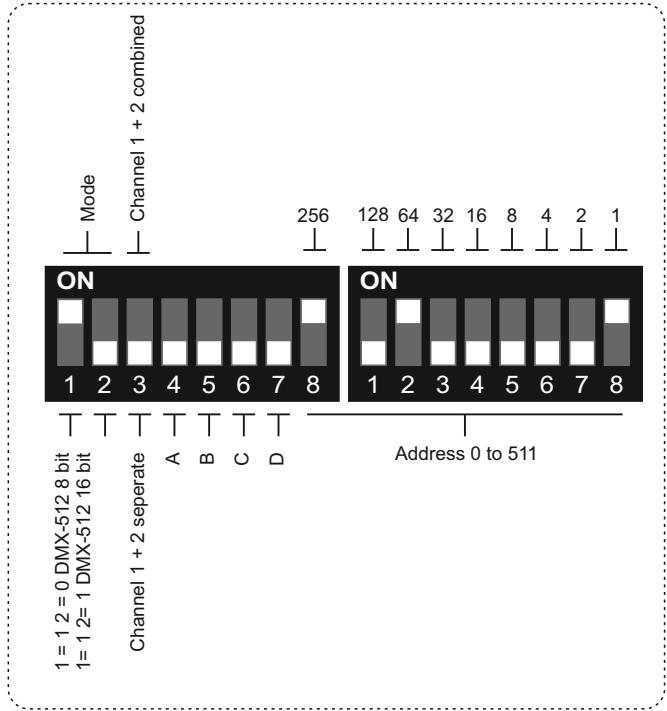
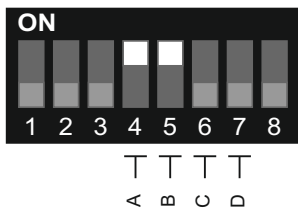
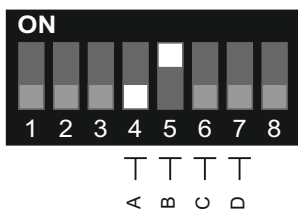
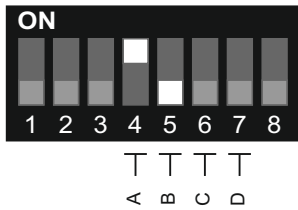
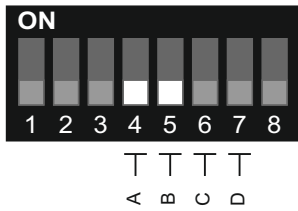


LT-UD-700 Universal dimmer

Dipswitch settings

With the on board dipswitches the UD-700 universal dimmer can be configured. The dipswitches can be found underneath the top cover

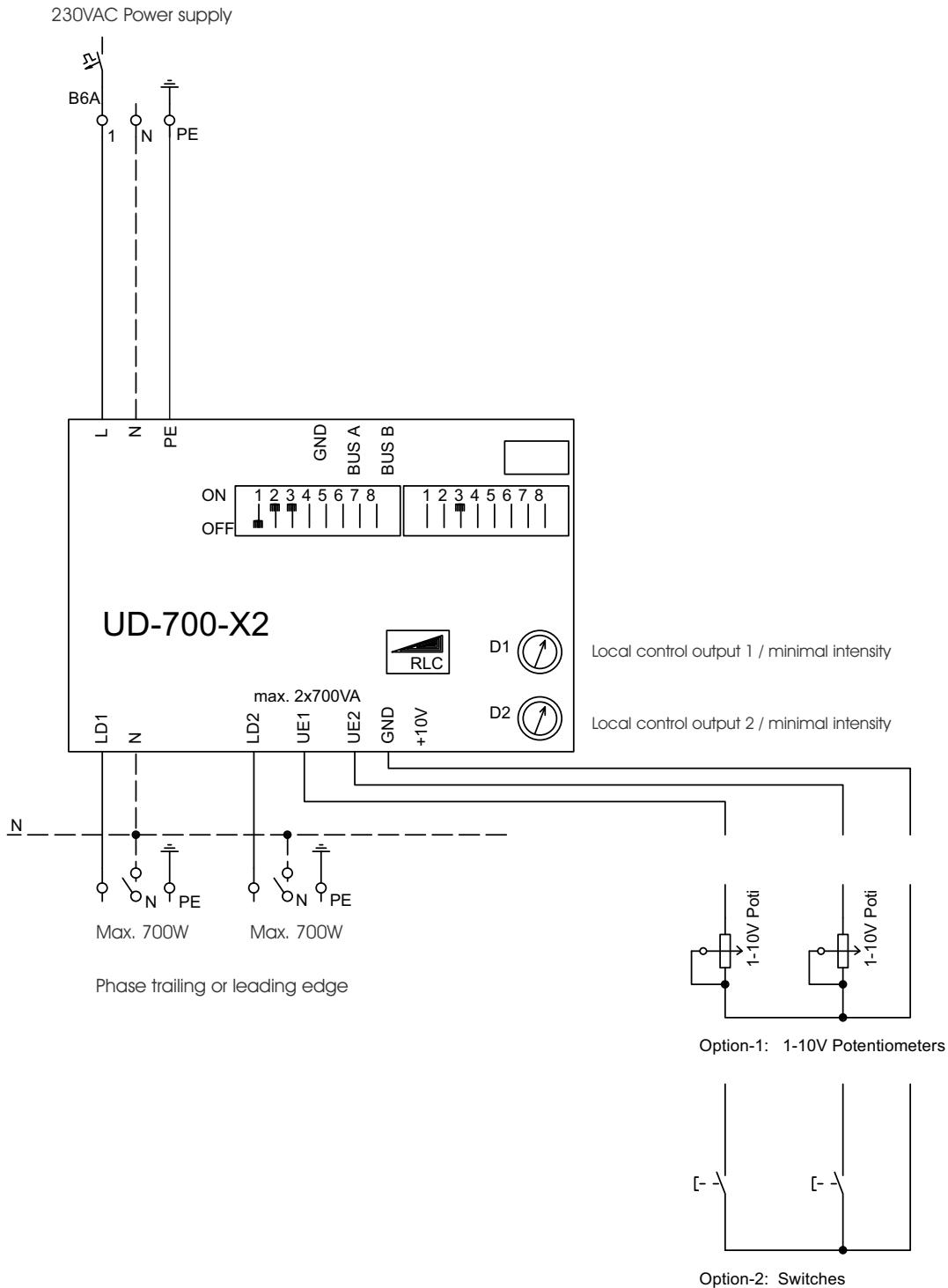
Both outputs are configured with automatic phase dim detection. See below the configuration options for each dim option:



LT-UD-700 Universal dimmer

Connections

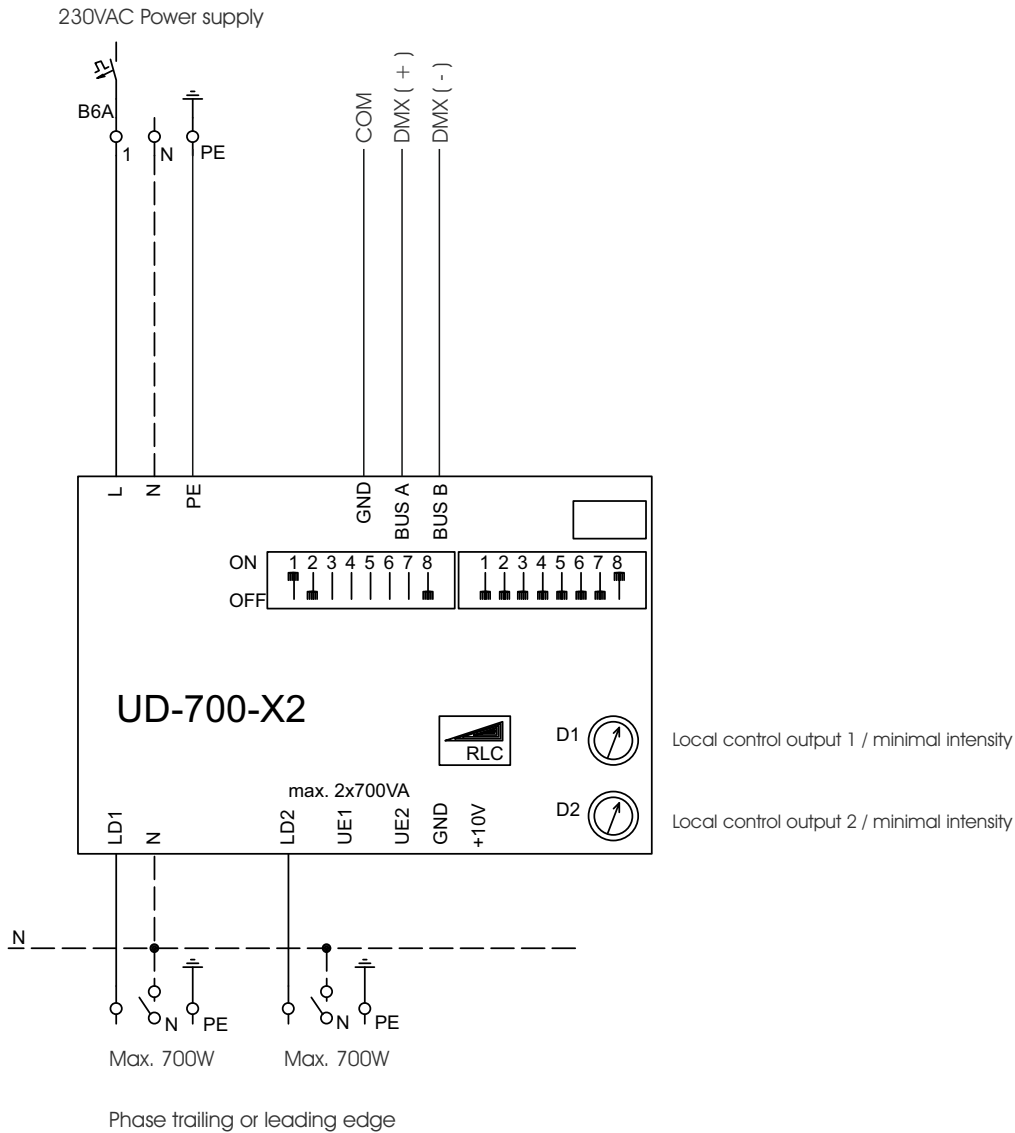
See below connections for standalone or 0..10V / 1..10V, make sure to configure dipswitches appropriately



LT-UD-700 Universal dimmer

Connections

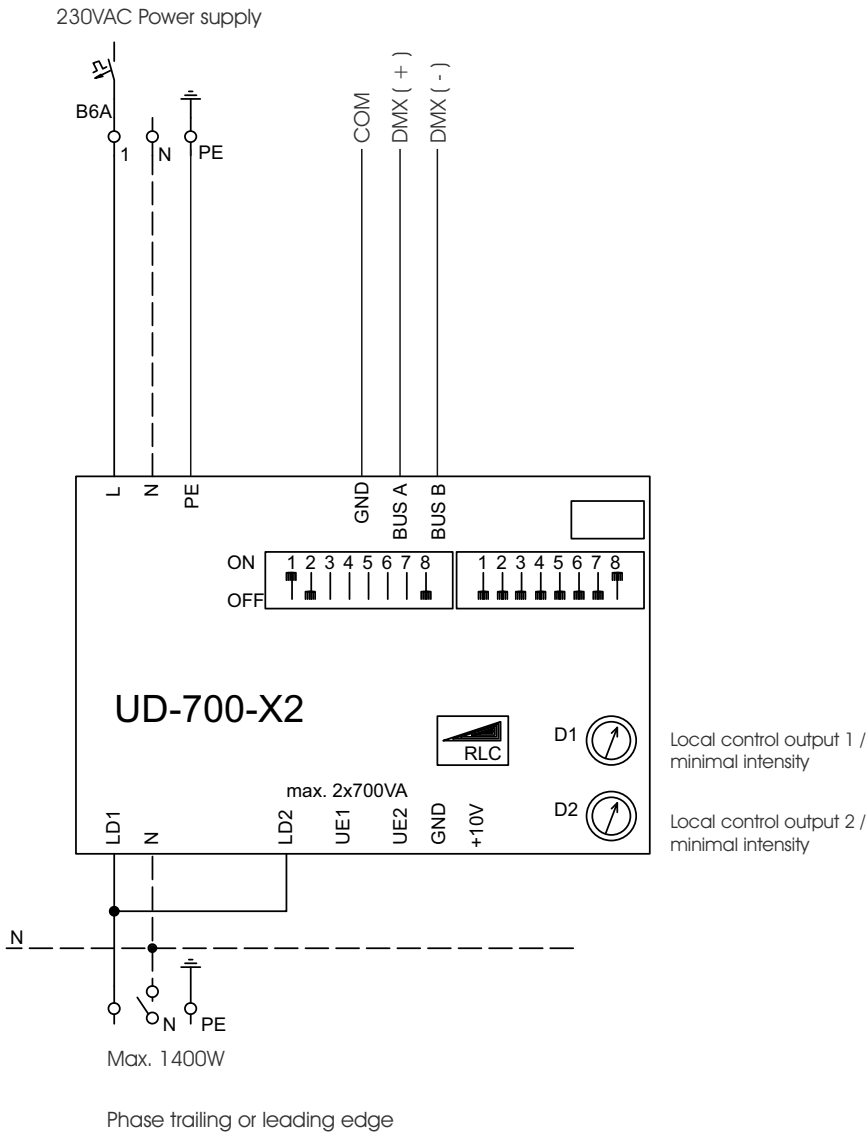
See below connections for DMX-512, make sure to configure dipswitches appropriately



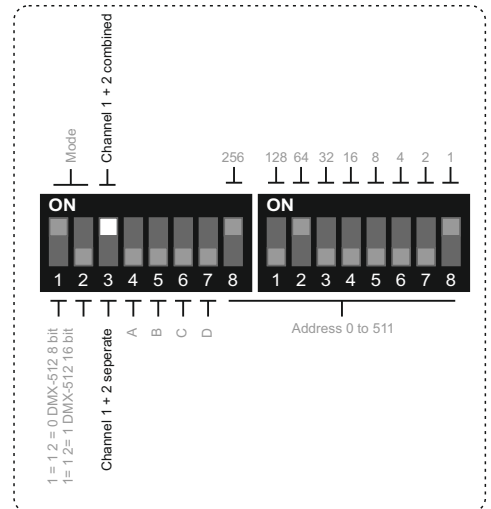
LT-UD-700 Universal dimmer

Connections

To create a 1400W output combine both Output 1 and 2 together as shown below and set the dipswitch settings to combined channel 1+2



DIPSWITCH SETTINGS COMBINED WHEN SET ON DMX512



DIPSWITCH SETTINGS COMBINED WHEN SET ON 0..10V/1..10V/ STAND ALONE

